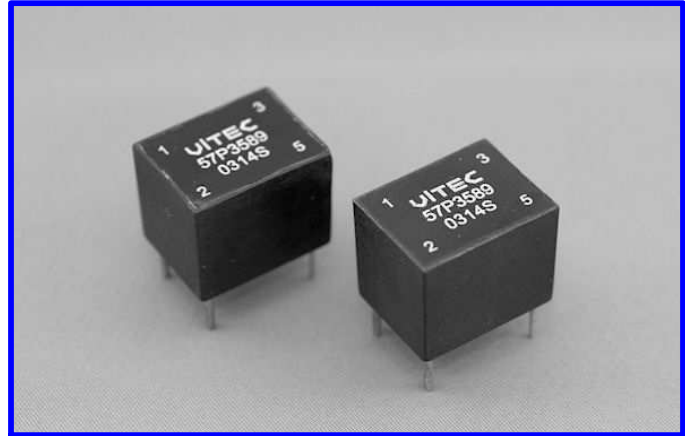


TYPE 57P

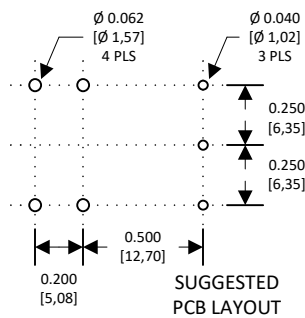
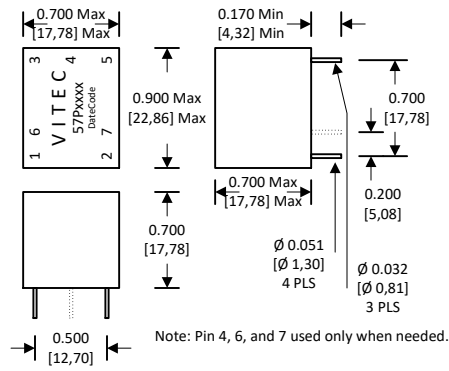
Current Sense Transformers

FEATURES

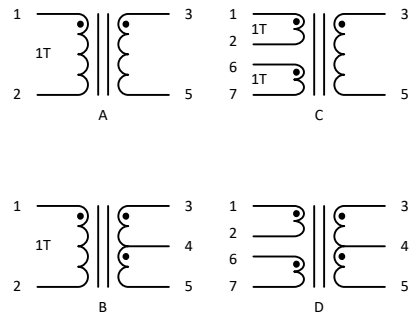
- Designed for use with switching power supplies.
- 1 or 2 turn primary winding.
- Reinforced insulation per IEC 380.
- Frequency range 20-200 KHz.
- Epoxy encapsulated construction.
- 3750 Vrms primary to secondary Hipot.
- Materials meet flammability requirement of UL94V-0.
- Built to EN 60950:1992 A11:1997.
- Rated Primary Current: 20 Amps peak for all listed parts using 1 turn Primary



DRAWING



SCHEMATICS



All dimensions given in inches [mm]. Tolerances unless otherwise specified. .XX±.01 [.X±.25] .XXX±.005 [.XX±.13] Angular: ±1°

ELECTRICAL CHARACTERISTICS @ +25°C

Part Number (1T Primary)			Part Number (2T Primary)			Secondary Turns	Secondary Inductance [#]	Secondary DCR	Secondary Terminating Resistance*	Primary Unipolar Rating***
Classic	RoHS	SCH	Classic	RoHS	SCH	Turns ±5%	mH MIN	Ohm MAX	Ohm TYP	Amp μSec MAX
57P3586	57PR3586	A	57P3596	57PR3596	C	50	5.0	0.70	50	150
57P3587	57PR3587	A	57P3597	57PR3597	C	100	20.0	1.40	100	300
57P3588	57PR3588	A	57P3598	57PR3598	C	200	80.0	4.50	200	600
57P3589	57PR3589	A	57P3599	57PR3599	C	300	180.0	11.00	300	900
57P3617	57PR3617	B	57P3627	57PR3627	D	50 CT	5.0	0.70	50 **	150
57P3618	57PR3618	B	57P3628	57PR3628	D	100 CT	20.0	1.40	100 **	300
57P3619	57PR3619	B	57P3629	57PR3629	D	200 CT	80.0	4.50	200 **	600
57P3620	57PR3620	B	57P3630	57PR3630	D	300 CT	180.0	11.00	300 **	900

Add an "R" to the part number after "P" for the RoHS compliant version (i.e. 57PR3586 is the RoHS compliant version of 57P3586).

- Notes: * For voltage across terminating resistance of 1 Volt per Ampere
 ** For center-tapped units, terminating resistance for each half of winding is 1/2 the listed value.
 *** Amp-microsecond (Amp μSec): Equals the product of Primary-Peak-Current times Peak-Current-Width in microseconds.
 # Test frequency 10KHz, 1 VRMS.