

# TYPE 28C

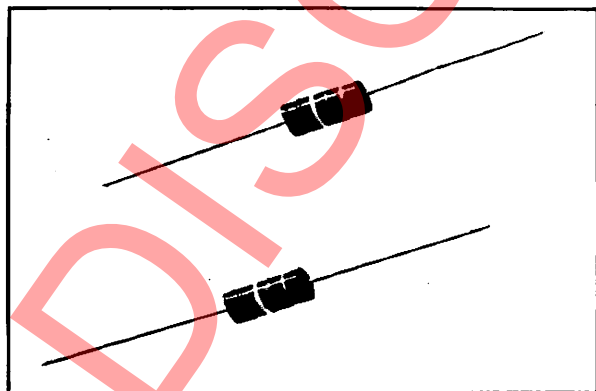
## MOLDED SHIELDED INDUCTOR

### FEATURES

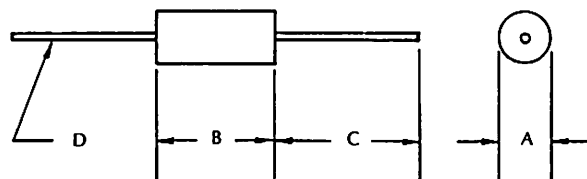
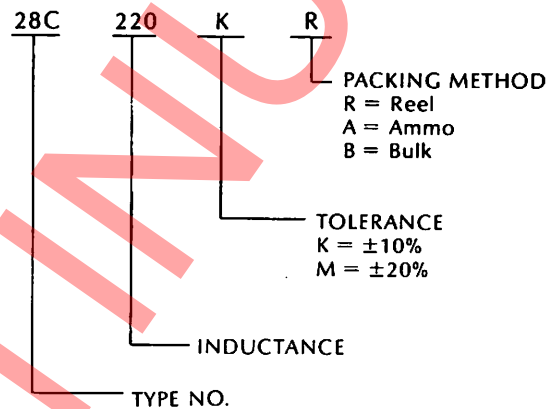
- \* Electromagnetic shielded
- \* Epoxy molded construction provides excellent moisture protection
- \* Wide inductance range in small package
- \* Precision performance, excellent reliability
- \* Flame retardant coating
- \* Available in bulk or tape and reel packaging

### SPECIFICATIONS

- \* **Operating Temperature:**  $-20^{\circ}\text{C}$  to  $+105^{\circ}\text{C}$
- \* **Inductance Tolerance:** standard  $\pm 10\%$   
special tolerance available on request
- \* **Dielectric Strength:** 1000 VAC  
per MIL-STD-202, method 301
- \* **Insulation Resistance:** 1000 Megohms  
per MIL-STD-202, method 302
- \* **Lead:** Tinned copper
- \* **Lead Pull:** 5 lbs.
- \* **Vibration:** Per MIL-STD-202, method 204
- \* **Shock:** Per MIL-STD-202, method 205
- \* **Solderability:** Per MIL-STD-202, method 208
- \* **Moisture Resistance:** Per MIL-STD-202, method 106
- \* **Immersion:** Per MIL-STD-202, method 104



### PART NUMBERING SYSTEM



STYLE	A	B	C	D
	$\pm 0.01$	$\pm 0.02$	MIN.	$\pm 0.002$
28C	0.175	0.400	1.25	0.025

# TYPE 28C

PART NUMBER	L	Q	TEST FREQ.	SRF	DCR	RATED CURRENT
	μH		MHz	MHz	OHM	mA
	±10%	MIN.		MIN.	MAX.	MAX.
28CR22K	0.22	40	25.0	250	0.07	1100
28CR27K	0.27	44	25.0	250	0.11	855
28CR33K	0.33	44	25.0	250	0.13	780
28CR39K	0.39	44	25.0	250	0.18	670
28CR47K	0.47	44	25.0	235	0.25	565
28CR56K	0.56	44	25.0	210	0.33	490
28CR68K	0.68	45	25.0	190	0.45	420
28CR82K	0.82	45	25.0	180	0.59	370
28CIR0K	1.0	45	25.0	140	0.07	1070
28CIR2K	1.2	50	7.9	130	0.10	895
28CIR5K	1.5	50	7.9	115	0.12	815
28CIR8K	1.8	50	7.9	105	0.14	775
28C2R2K	2.2	50	7.9	100	0.19	650
28C2R7K	2.7	55	7.9	92	0.28	550
28C3R3K	3.3	55	7.9	85	0.35	495
28C3R9K	3.9	55	7.9	75	0.40	460
28C4R7K	4.7	55	7.9	70	0.55	400
28C5R6K	5.6	55	7.9	65	0.72	365
28C6R8K	6.8	55	7.9	55	1.02	280
28C8R2K	8.2	50	7.9	50	1.32	270
28C100K	10	55	7.9	46	1.62	230
28C120K	12	60	2.5	44	2.00	215
28C150K	15	45	2.5	49	0.80	375
28C180K	18	45	2.5	45	0.89	350
28C220K	22	46	2.5	41	0.96	300
28C270K	27	46	2.5	38	1.19	275
28C330K	33	46	2.5	34	1.37	245
28C390K	39	50	2.5	29	1.93	210
28C470K	47	50	2.5	27	2.11	200
28C560K	56	45	2.5	25	2.23	195
28C680K	68	40	2.5	21	2.70	176
28C820K	82	40	2.5	10	2.44	185
28C101K	100	40	2.5	10	3.12	175
28C121K	120	50	0.79	9.7	3.60	160
28C151K	150	50	0.79	8.5	4.10	143
28C181K	180	55	0.79	8.0	4.40	140
28C221K	220	55	0.79	7.5	5.00	130
28C271K	270	55	0.79	7.0	5.80	122
28C331K	330	55	0.79	6.5	6.40	114
28C391K	390	60	0.79	6.2	7.40	110
28C471K	470	60	0.79	5.7	9.50	99
28C561K	560	60	0.79	4.7	10.50	90
28C681K	680	60	0.79	4.5	11.80	84
28C821K	820	60	0.79	4.2	13.00	80
28C102K	1000	60	0.79	3.8	17.50	70